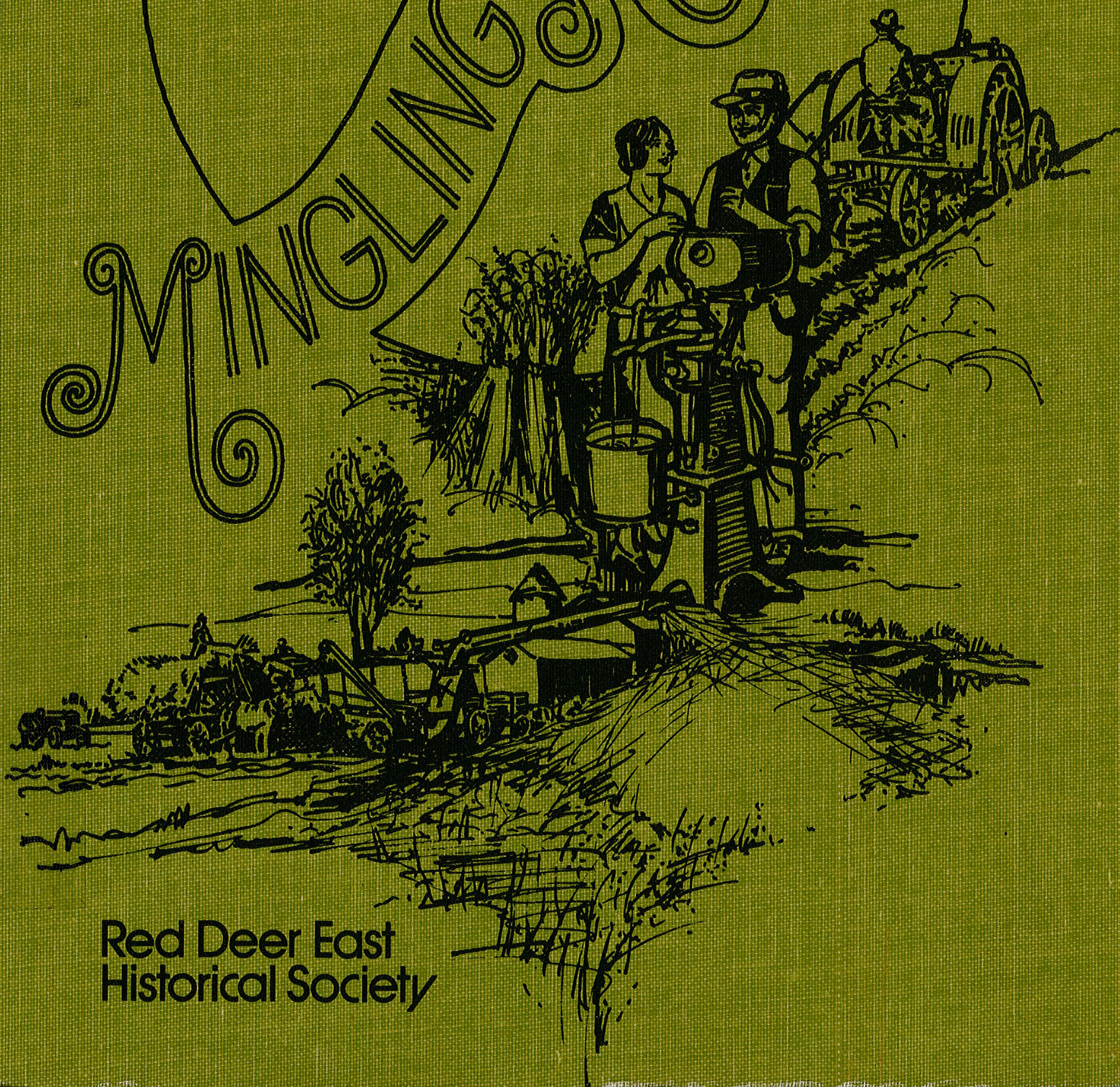
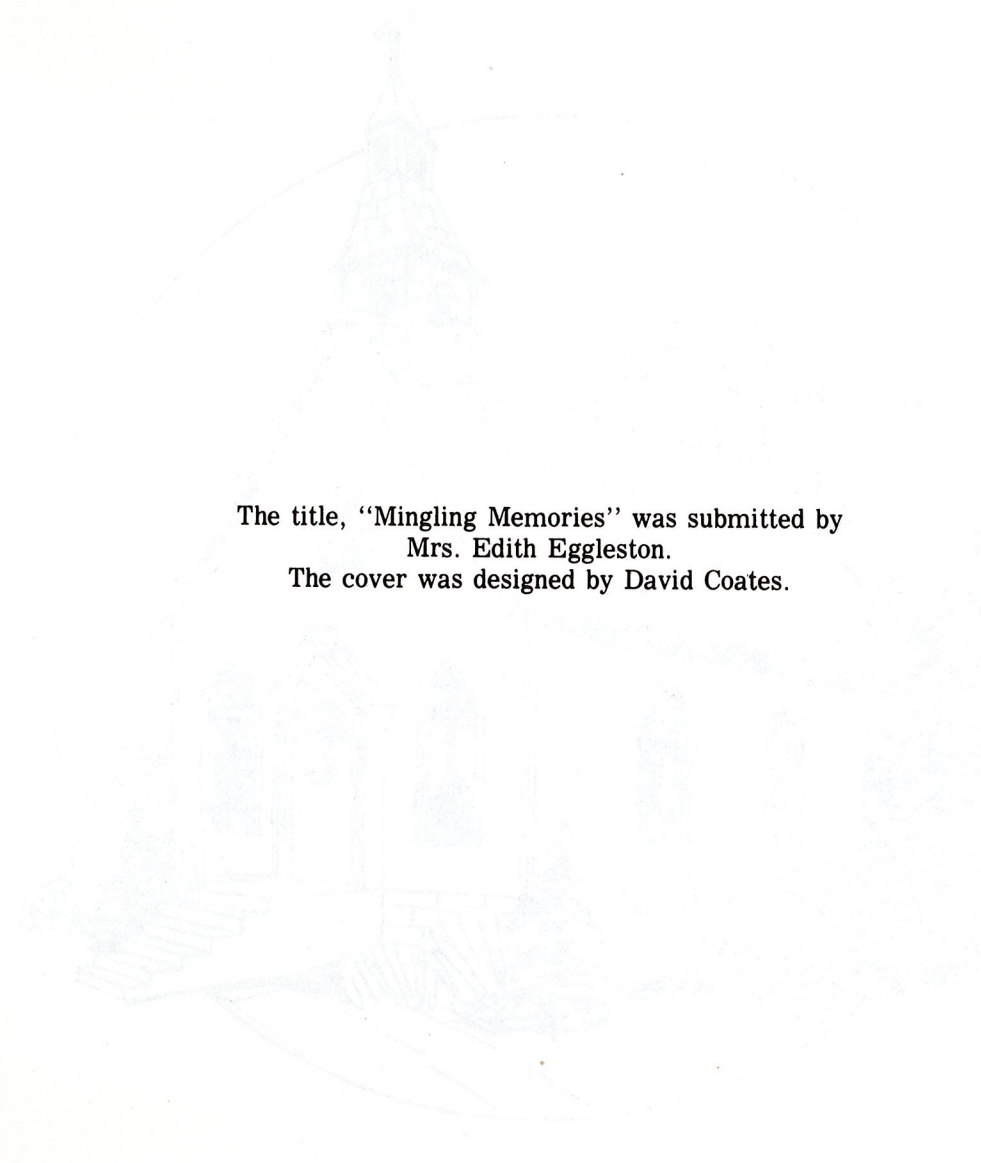


MINGLING MEMORIES



Red Deer East
Historical Society



The title, "Mingling Memories" was submitted by
Mrs. Edith Eggleston.
The cover was designed by David Coates.

ISBN 0-88925-018-9

© 1979
Serial Number 291994
Register 268

published by
Red Deer East Historical Society
R.R. No. 3, Red Deer
Alberta T4N 5E3

printed by
Friesen Printers
5720 Macleod Trail S.
Calgary, Alberta
Head Office: Altona, Manitoba

MORRISROE, JAMES AND ETHEL — by Ethel Morrisroe

Jim, Ethel and family moved to their new home in the Springvale district in November, 1975. Prior to the move they had lived in the Clearview district for 27 years.

Jim was born and raised on the family farm in the Pine Hill district located ten miles west of Penhold. His parents, Edward and Catharine Morrisroe, of Irish and German descent, had moved there from Delphi, Indiana in 1906. Jim was the fifth child of a family of eight children. He attended school at Pine Hill, Penhold and St. Joseph's Convent in Red Deer. Upon completion of his schooling he returned home to assist with the family farming operation. When his parents retired to Red Deer in 1938, Jim and his brothers, Joe and Lawrence, took over the full management of the farm. The partnership was dissolved in 1940 when his brothers went into the hotel business and Jim took over the family farm. On August 7, 1940, he married Ethel Stickland, youngest daughter of Mr. and Mrs. W. G. Stickland of the Ridgewood district.

Ethel's parents, William and Janie Stickland came to Canada from Bodmin, Cornwall, England. Her father arrived in 1901 and her mother followed in 1907. (A more detailed story of their years in Alberta is given in the Fairland's section of this book and a fuller account of the family in the "Ridgewood History.") Ethel was born when they lived on the Evans farm in the Fairland district. She took her early education in the local Ridgewood School and attended Red Deer High School. Graduating from the Camrose Normal College she taught in the Ridgewood and Tindastol Schools until her marriage in 1940.

Jim and Ethel lived on the farm in Pine Hill until 1948. It was there that daughter Norma and son Ron were born. Besides farming the land Jim fed hogs for a few years, then he decided to try his hand raising

sheep as his father had done. A time remembered is when he bought a flock of sheep from a farmer near Red Deer. He left in early morning and arrived home late in the evening, foot sore and weary, for he and his dog had herded the flock a distance of 25 miles! He was one of the first in the district to acquire a pull-type combine to replace the threshing machine and to help overcome the farm labour shortage prevalent then. The family participated in the local activities of both Pine Hill and Ridgewood — Ethel was a member of the local Pine Hill F.W.U.A. and joined the Ridgewood W.I. when it was organized in 1947.

In the spring of 1948, Jim sold the farm to the Hutterites and bought the late James Cruickshank farm, N½ 10-38-27 located on the outskirts of Red Deer in the Clearview district. They moved to this farm in the fall of 1948. It was here their child, Gail, was born in 1951.

The first year on the Cruickshank farm was one to remember. For Ethel, it was a long and lonesome winter. They were new to the community and winter travel was limited due to poor road conditions, and baby sitters were hard to come by. Jim was away every day working at Jim McRobbie's Blacksmith and Welding Shop mounting a grain cleaner on a truck so he could augment his income, cleaning grain. In February, a heavy snowfall with drifting snow, raged all night and the next day. For a few days Jim walked to town atop the drifts until a snow plough cleared the roads. With the spring thaw, came flooded roads and water filled ditches. The Grain cleaner was completed in early spring; for the next few winters, Jim was away from home cleaning grain.

While living in the Clearview district Jim joined the Red Deer Lions Service Club of which he has been a member for 30 years. He served as President for one term and was presented his 25 year Perfect Attendance Pin. Ethel is a charter member of the Lioness Club which she joined in 1950. A highlight was when they, along with five couples from the Red Deer Club, attended the World Lions Club Convention in Tokyo in 1969.

Ethel joined the Clearview W.I. and has been an active Institute member for over 30 years. Through the years she has held office at all levels and was elected Provincial President for a two year term in 1973. For her dedication and devoted service to the Organization, she was the recipient of the Queen's Silver Jubilee Medal in 1977. For years she has worked on the Ladies' Committee of the Red Deer Exhibition and served as a Board member for a two year term.

Both Ethel and Jim enjoy curling as a sport. Jim first curled in the old curling rink when he was persuaded by the late Jim McRobbie to start curling. He has curled in most of the farmers' bonspiels and curls regularly with the men's evening curlers. The highlight of his curling as lead on Bob Cruickshank's rink was when they won the Provincial Senior Curling Championship which entitled them to compete in the National Competition in Sudbury, Ont. in 1973. Ethel curls with the Ladies "Afternoon Club".

As a hobby, Ethel is keenly interested in handicrafts, particularly needlework, for which she has



Morrisroe Family, standing; Larry, Gail, Ron and Norma, seated; Ethel and Jim.

won prizes as an exhibitor. She enjoys reading and travelling.

The Morrisroe family lived in the old log stuccoed house on the Cruickshank farm until 1954 when they built a new home. In 1952, Jim bought the Jones' farm, NW 15-37-27 which he farmed for five years and then sold to Alex Farwell.

With the city growing and expanding, developers became interested in buying acreages on the NW $\frac{1}{4}$ of 10. St. Mary's School was built in 1957. The farm became incorporated in the city in 1960. Following the city's purchase of 100 acres, the Annie L. Gaetz School was built as well as several homes. In 1965, Jim donated four acres of land on which was built St. Mary's Catholic Church — a circular brick structure of unusual design — an architectural feat by Doug Cardinal! It has received nation-wide publicity and is viewed regularly by visitors to Red Deer. When the remaining 20 acres were sold, the time had come to move the farm buildings three miles east to the Beckley farm in the Springvale district, which Jim had bought in 1958.

The moving of the farm buildings was a formidable task. Jim and Ron with the assistance of neighbor, Jim McKee, dismantled the metal building, measuring 100' x 40', and moved it in four sections, by truck, to the farm and remounted it on a cement base.

The city continued to expand. In 1975 the NE $\frac{1}{4}$ of 10 was sold to the city and Jim seeded his last crop on this property in 1977. At the same time he sold the Doug Smith quarter in Balmoral which he had purchased in 1967. Nothing stops progress and progress necessitates change — thus what was once a thriving farm is now a residential area known as "Morrisroe Subdivision".

The two storey brick home, built and lived in for years by the Beckley family, was still on the property when Jim purchased the estate. Eventually it was torn down and the bricks which had come from the "Piper Brickyard" were salvaged and used to build the fireplace in the new home. In 1962 Jim and Ron bought the old Pool elevator in Red Deer. They dismantled it one winter and spent the next year re-erecting it on the farm with the assistance of a friend and neighbor, Joe Bourque, and it serves as a landmark today.

Through the years Jim and Ron have added to their acreage. In 1961, Jim purchased the McCarragher farm in the Valley Centre district, in 1964, Ron bought the late Don Bower land near the Canyon, and in 1967 Jim and Ron bought the Carl Lobb farm in the Balmoral district. Their last acquisition in 1975, was the purchase of the John B. Rich farm located in the Springvale district.

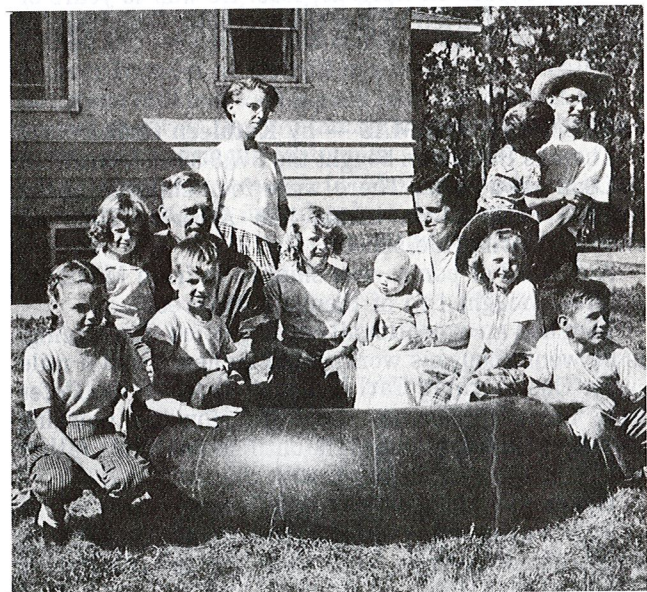
Jim and Ethel raised a family of three children. The children took their earlier education at the Roman Catholic Separate Schools and graduated from the Lindsay Thurber Composite High School. Norma Carol trained as a Nursing Aide at the Calgary Nursing Aide Centre. She has worked in hospitals in Westlock and Toronto and is presently employed at the Innisfail Hospital. Norma was a member of the Horn Hill 4-H Clothing Club and won the Efficiency Award which entitled her to attend Provincial 4-H Club Week at Olds. Ronald James attended Olds Agricultural College. He enjoys travelling and is a skiing enthusiast. Ron and

his father farm together on their respective farms and he lives in the former Doug Smith home in the Balmoral district. Gail Marlene was a member of the Horn Hill 4-H Clothing Club and received the Royal Bank Silver Tray award for her Project Book. She is keenly interested in sewing and enjoys reading, travelling, and skiing. Graduating from the University of Alberta in 1973, with a degree in Education, she has been teaching Grade two at the River Glen School. In 1976, she married Laurence Wyman.

NICHOLS, ROGER AND PAULINE — by Roger Nichols

Here are a few facts and some history of the family of Pauline and Roger Nichols, son and daughter-in-law of Milford and Emma Jane Nichols.

"Scoot" and "Polly" as they were known in the Springvale district, moved into the old house on the McIntosh place in October of 1948. At that time they were young married people and had three children, Sharon, Ronnie and Mary Jane. Previously they had lived at Erskine on the Nichols' home farm. While living in Springvale district they farmed the land owned by Scoot's dad as well as the home farm at Erskine. Sharon began her schooling at Springvale the first year, the new school had been built (1952). Scoot loved to play baseball, ping-pong and curl in the winter and Pauline was active in Women's Institute and other community affairs. By the time they moved back to Erskine in the spring of 1953 there were six children in the family which later grew to twelve six boys and six girls. In the summer of 1953 Donald Bodwell built our first new home. He was 22 years old and got married that summer.



Roger and Pauline Nichols and family (1959).

Scoot and Pauline are semi-retired now and continue to live on one of their farms in the Stettler area. Nine of the children are married and two married boys live on the home farm and are taking over active operation of the farms along with their younger brother Raymond. All of the family continues to enjoy